

EIDOS INSTITUTE

an international public policy think tank



Community Planning for Sustainable Development and Community Wellbeing

Presented to

Local Government Managers Australia - Queensland Annual Conference

on 13 October 2010 by

Jamie Quinn - Senior Associate of Eidos Institute

Professor Mike Hefferan – Pro Vice-Chancellor (Regional Engagement) and Professor Property and Development – University of Sunshine Coast

Professor Bruce Muirhead – Chief Executive Officer - Eidos Institute

(Part 4 – Jamie Quinn)



Councils leading Communities



Community Plans

Sustainable Development

Community Wellbeing



The past can
teach us many
lessons for
the future



From 1 July 2010 Councils across Queensland will be required to prepare a long-term **Community Plan** (to be in place by Dec 2011)

Sustainable development contributes to community wellbeing

Successful Community Plans embrace sustainable development and deliver **community wellbeing**



Sustainable development is development that meets the needs of the present without compromising the ability of future generations to meet their own needs.

Source: 1987 Report of the Brundtland Commission (United Nations World Commission on Environment and Development)

upload in www.tot31...



How NOT to do it



Community wellbeing prevails if communities:

- embrace affordable, efficient, safe and sustainable development
- are well-serviced and healthy
- protect places of special aesthetic, architectural, cultural, historic, scientific, social or spiritual significance
- have integrated networks of pleasant and safe public areas for aesthetic enjoyment and cultural, recreational or social interaction

*Adapted from Queensland Sustainable Planning Act 2009



Australia is a highly urbanized nation





**Local sustainable
development
contributes to global
and national
sustainability solutions**

If we keep using the same strategies – we can expect to get the same results:

- **Exacerbation of existing social, environmental & economic detrimental impacts**
- **Greenspace loss**
- **Waterway degradation**
- **Airshed degradation**
- **More difficult to create economic development & job opportunities**





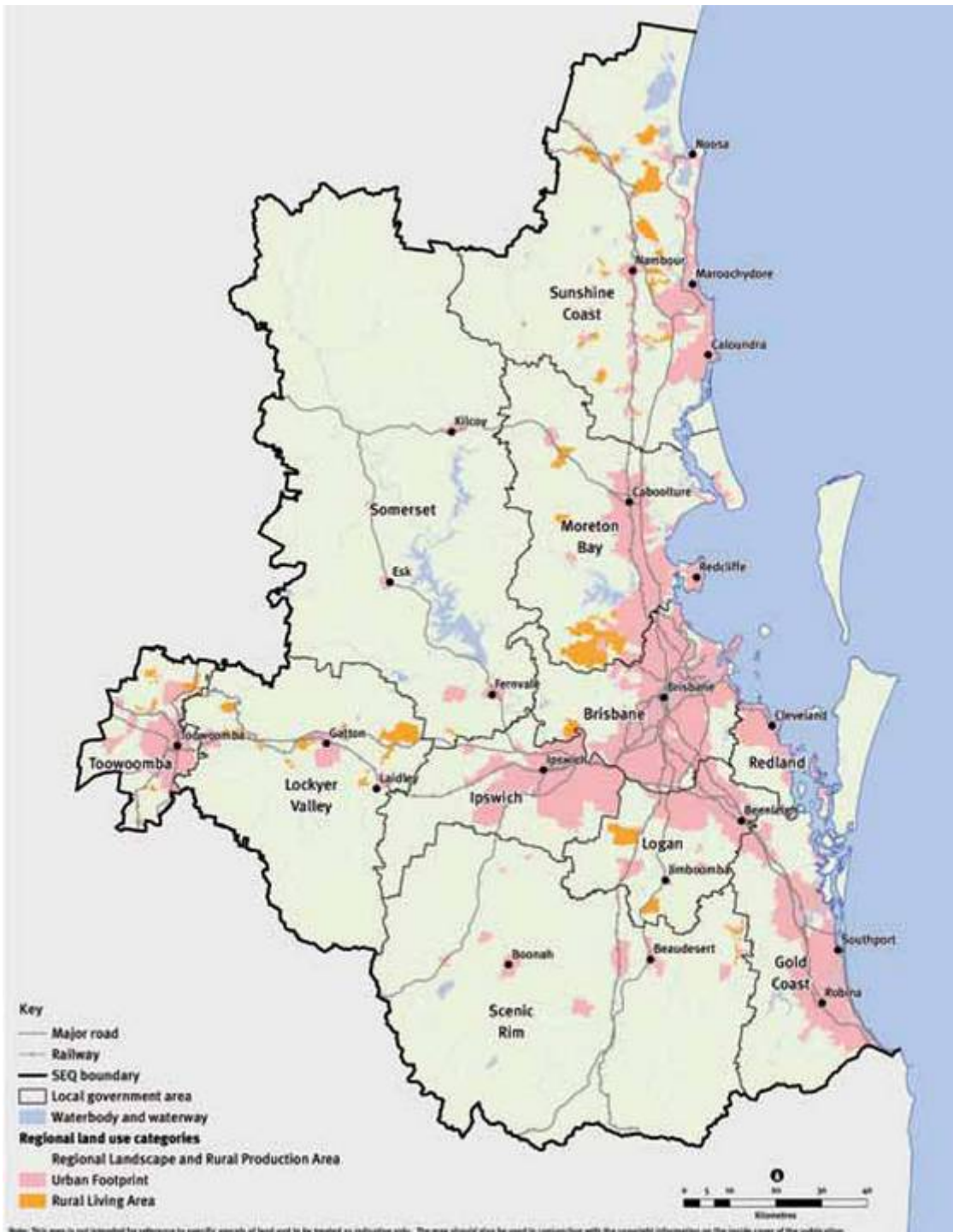
SEQ Urban Development Footprint 1980



Dumb Growth –what the urban footprint of SEQ could have been in the future without a comprehensive integrated Regional Plan

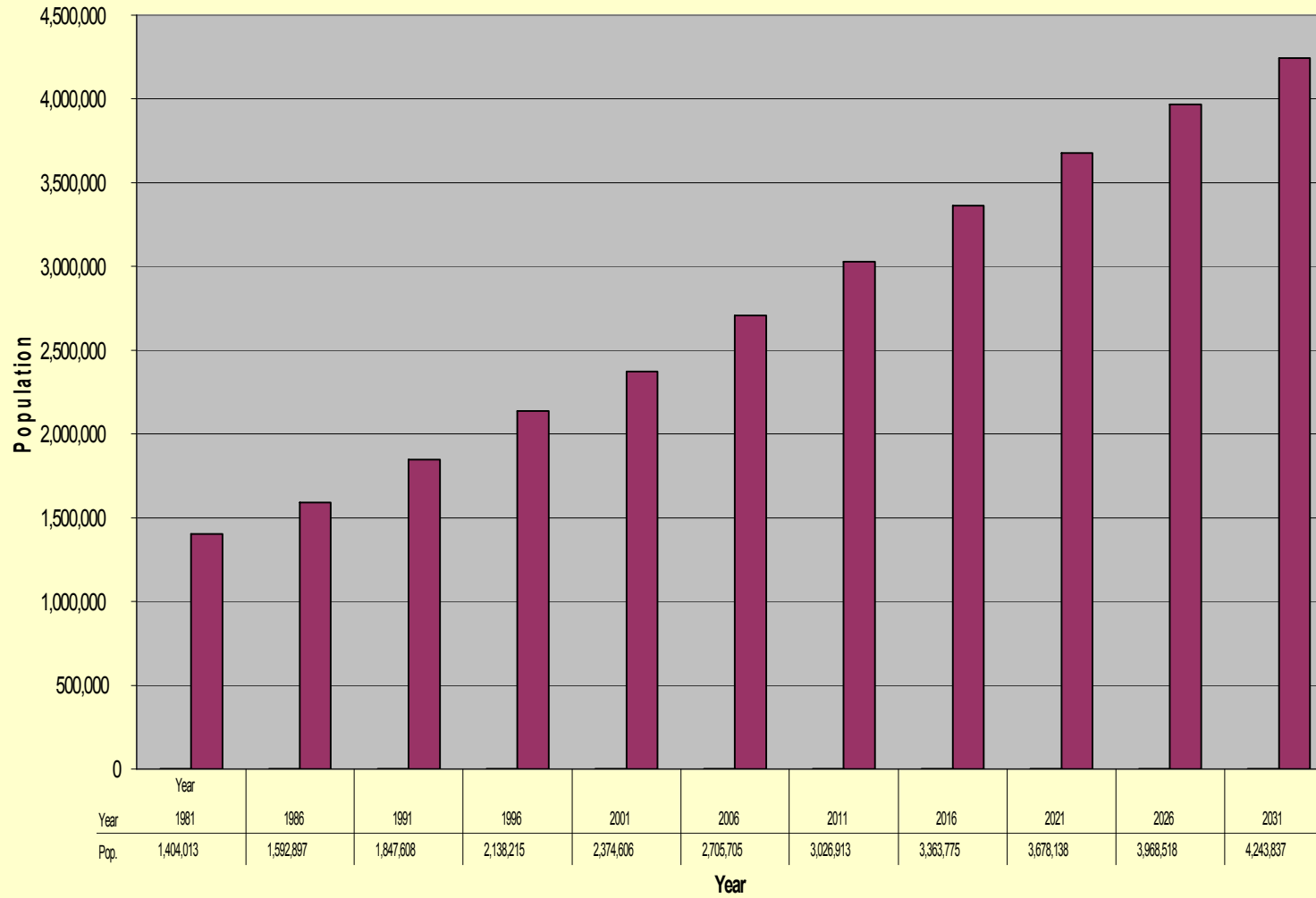
SEQ Regional Plan Urban Footprint

Source – Queensland
Department of Infrastructure
and Planning website





SEQ Population (Medium Series)



Data Source – Qld Treasury PIFU site




The Queensland Government recognizes the local and regional sustainable development challenge and is responding through:

- Water Resource Plans and Resource Operations Plans (Water Act)
- Regional Plans and Council Planning Schemes (Sustainable Planning Act 2009)
- a Local Government planning framework focused on sustainability and community wellbeing - headlined by the Community Plan (Local Government Act 2009)



China's Three Gorges Dam on the Yangtze River - world's largest hydro electric generator – 39 cubic kms - about 14 times the storage capacity of SEQ's Wivenhoe (including flood mitigation capacity) – Photo Attributed: Nowozin

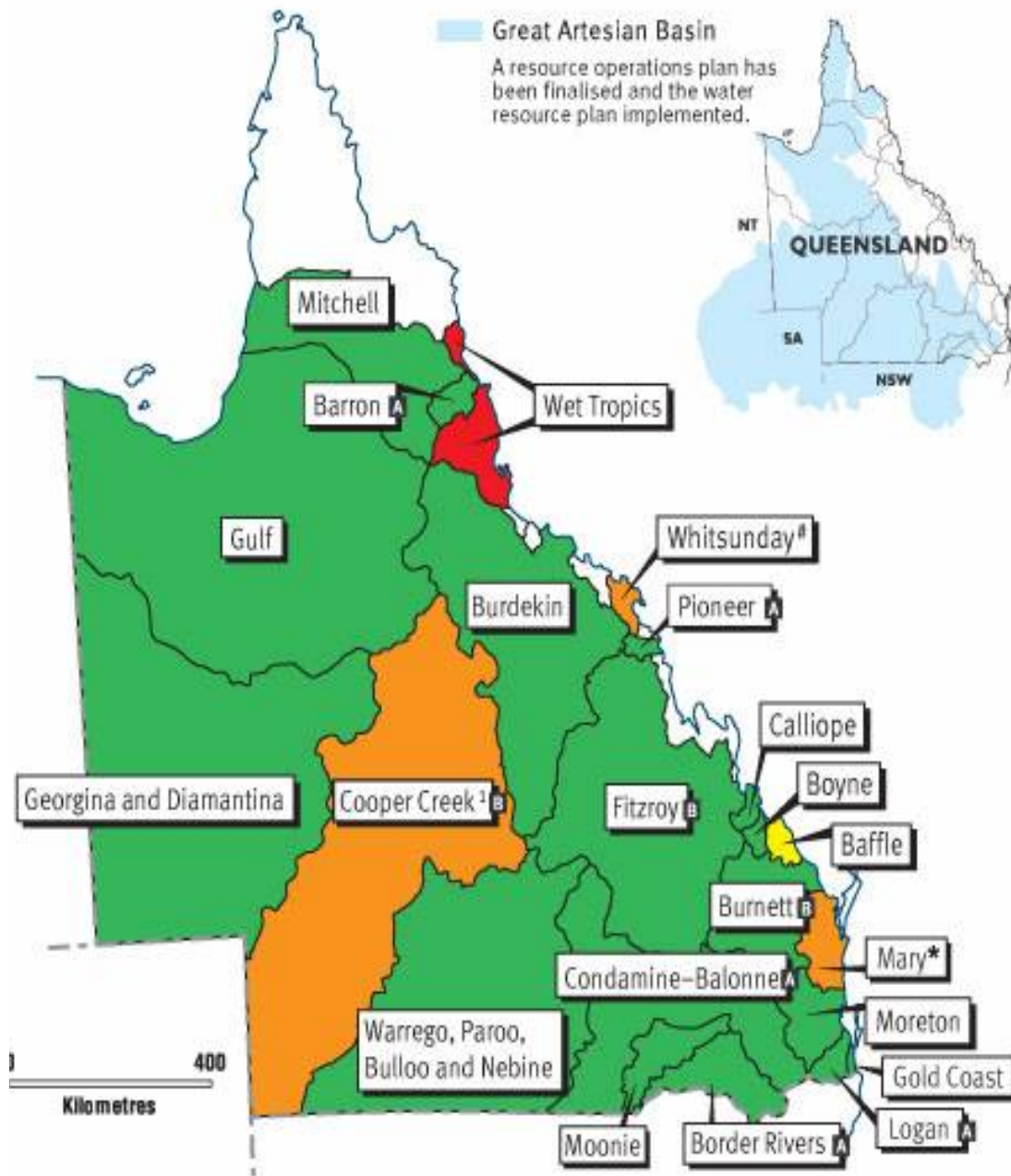


*'I love a sunburnt country
a land of sweeping plains
of ragged mountain ranges
of drought and flooding rains'*

'My Country' by Dorothea Mackellar



Water Resource Plans (WRP)
Resource Operations Plans (ROP)



Note: ¹ A resources operations plan is not required for Cooper Creek.

Water Planning Status

Red - Draft water resource plan in preparation

Yellow - Draft water resource plan released; draft resource operations plan in preparation

Orange - Water resource plan finalised

Draft resource operations plan in preparation[#]

Draft resource operations plan released*

Green - Resource operations plan finalised—Water resource plan implemented

A - Water resource plan or resource operations plan amendment under way

B - Water resource plan review under way

*Source: Qld Department of Environment and Resource Management website



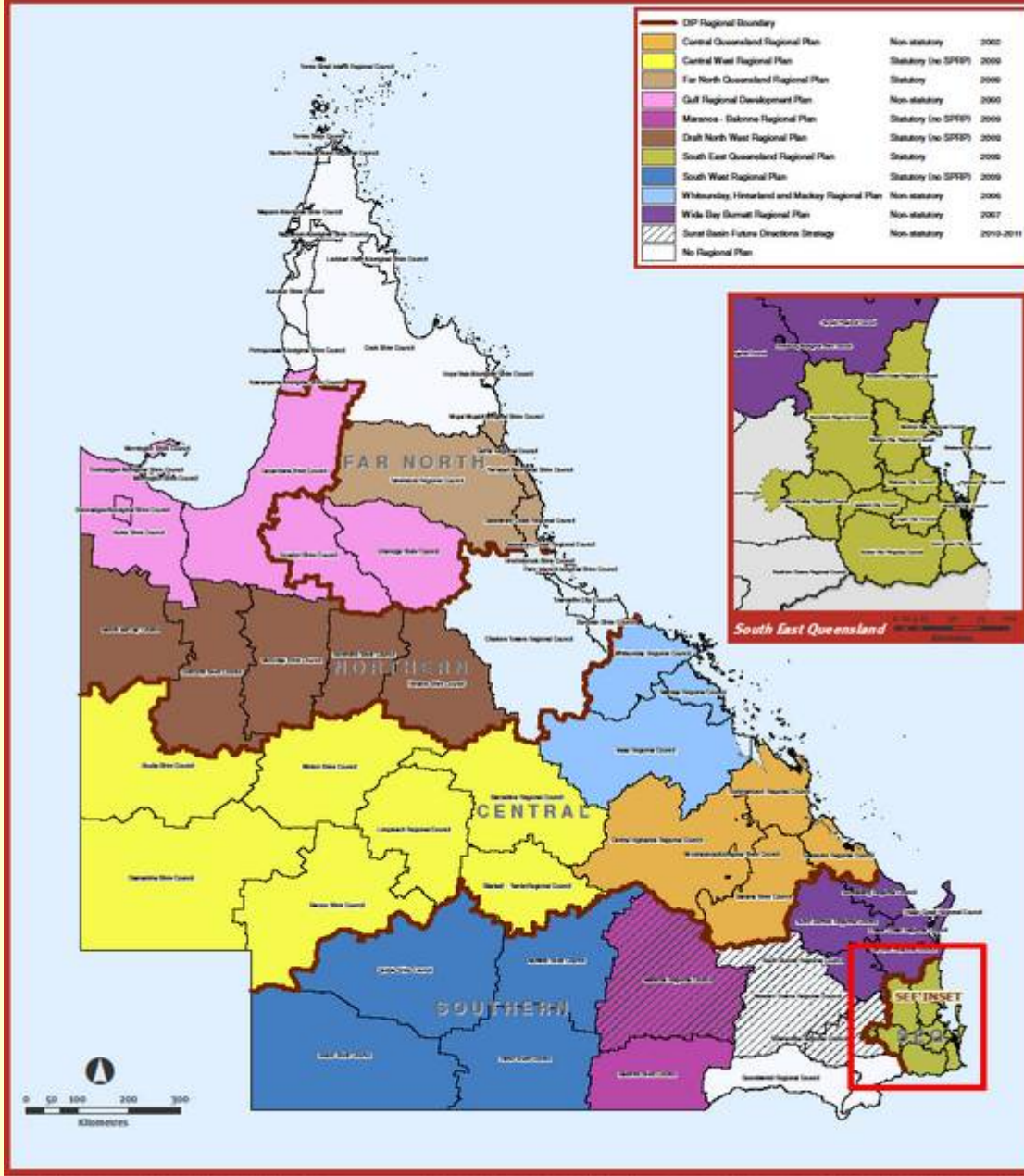
The WRP's and ROP's are being progressively complemented by more detailed planning such as:

- North West Qld Reg WS Strategy (in development)
- Far North Qld Reg WS Strategy (released March 2010)
- North Qld Reg WS Strategy (in development)
- South East Qld Reg WS Strategy (released July 2010)
- Central Qld Reg WS Strategy (released December 2006)
- Wide Bay Burnett Reg WS Strategy (in development)



Regional Plans identify:

- desired regional outcomes
- policies and actions for achieving the regional outcomes
- regional land use pattern
- regional infrastructure to service future land use patterns
- key regional environmental, economic and cultural resources to be preserved, maintained or developed.

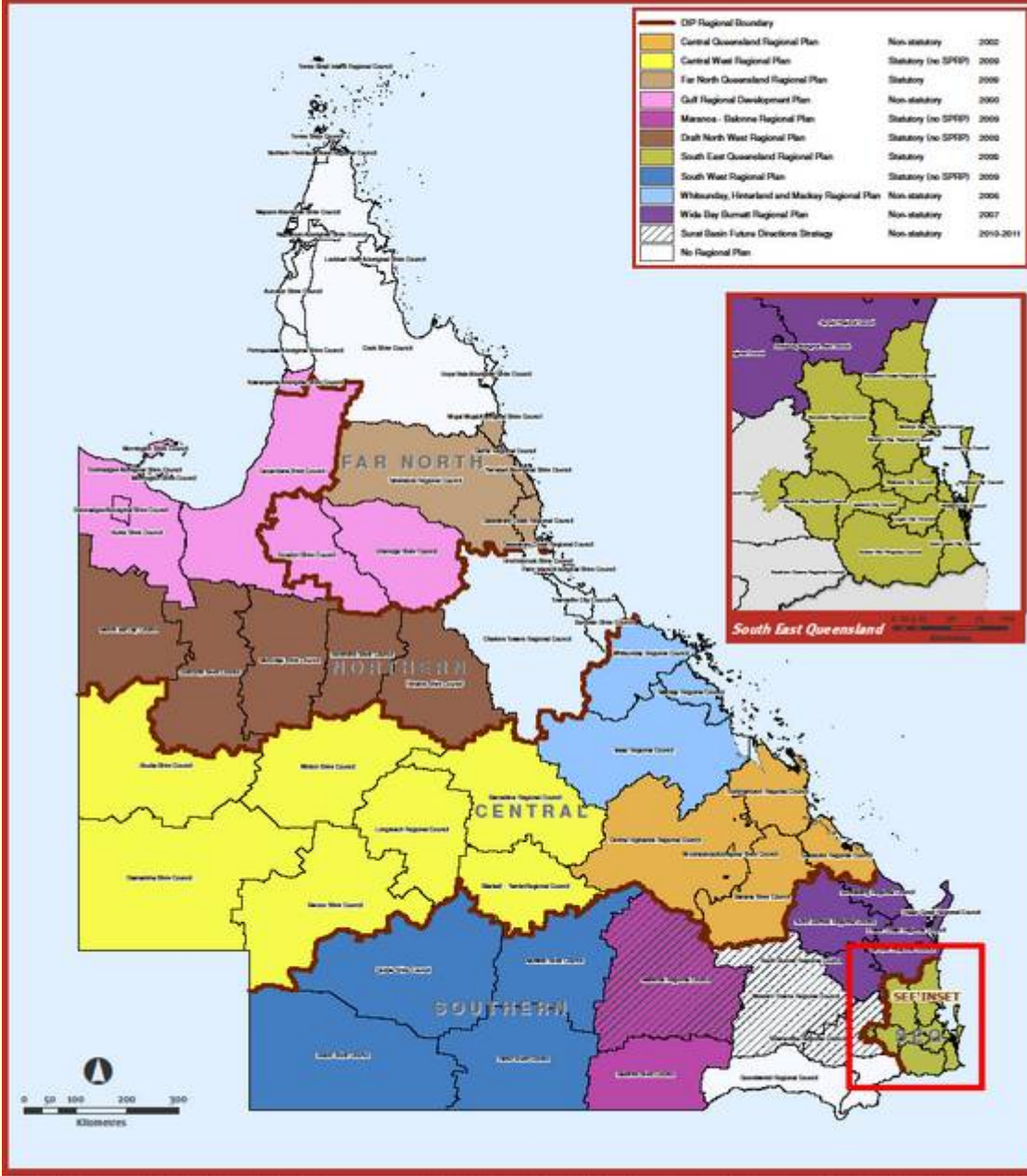


Statutory regional plans generally take precedence over most planning instruments.

Six (6) existing statutory regional plans:

- SEQ Reg. Plan
- Far Nth Qld Reg. Plan
- Central West Reg. Plan
- South West Reg. Plan
- Draft Nth West Reg. Plan
- Maranoa-Balonne Reg. Plan

Map Source: Qld Dept of Infrastructure and Planning website

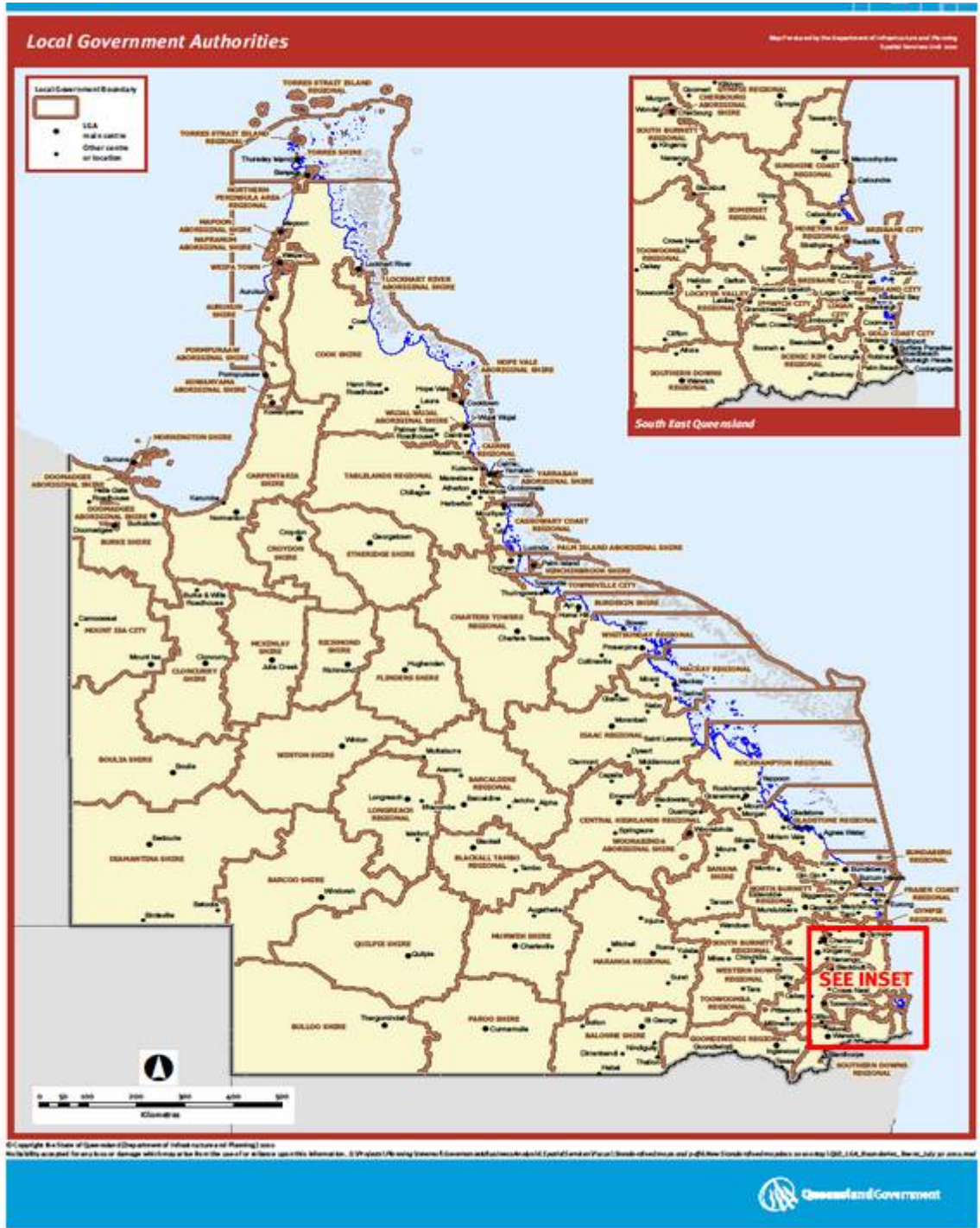


Non-statutory plans provide strategic advice and direction, however they do not prevail over other planning instruments.

Five (5) existing non-statutory regional plans:

- **Central Qld Regional Plan**
- **Gulf Regional Development Plan**
- **Whitsunday, Hinterland and Mackay Reg. Plan**
- **Wide Bay-Burnett Reg. Plan**
- **Surat Basin Future Directions Strategy**

Map Source: Qld Dept of Infrastructure and Planning website



Council Planning Schemes

57 of the 74 Qld Councils have Council Planning Schemes (and many have multiple schemes as a result of the amalgamations)

Map Source: Queensland Department of Infrastructure and Planning website

- From July 2010, Councils across Qld are required to prepare a long-term Community Plan
- Engaged visioning and leadership
- Evidence based planning and public policy for sustainable development and community wellbeing



HINTS:

- Take the helicopter view first
- Leverage off WRP's, ROP's, Reg WS Strategies and Reg Plans



- We can't avoid development - whether from increased population or physical rejuvenation or renewal
- Improper development threatens sustainability
- Sustainable development is our challenge



We have to get the balance right.

* Courtesy of Urbis Pty Ltd – Australian based International Consulting Firm of Urban Planners and Designers



To meet the sustainable development challenge we need to:

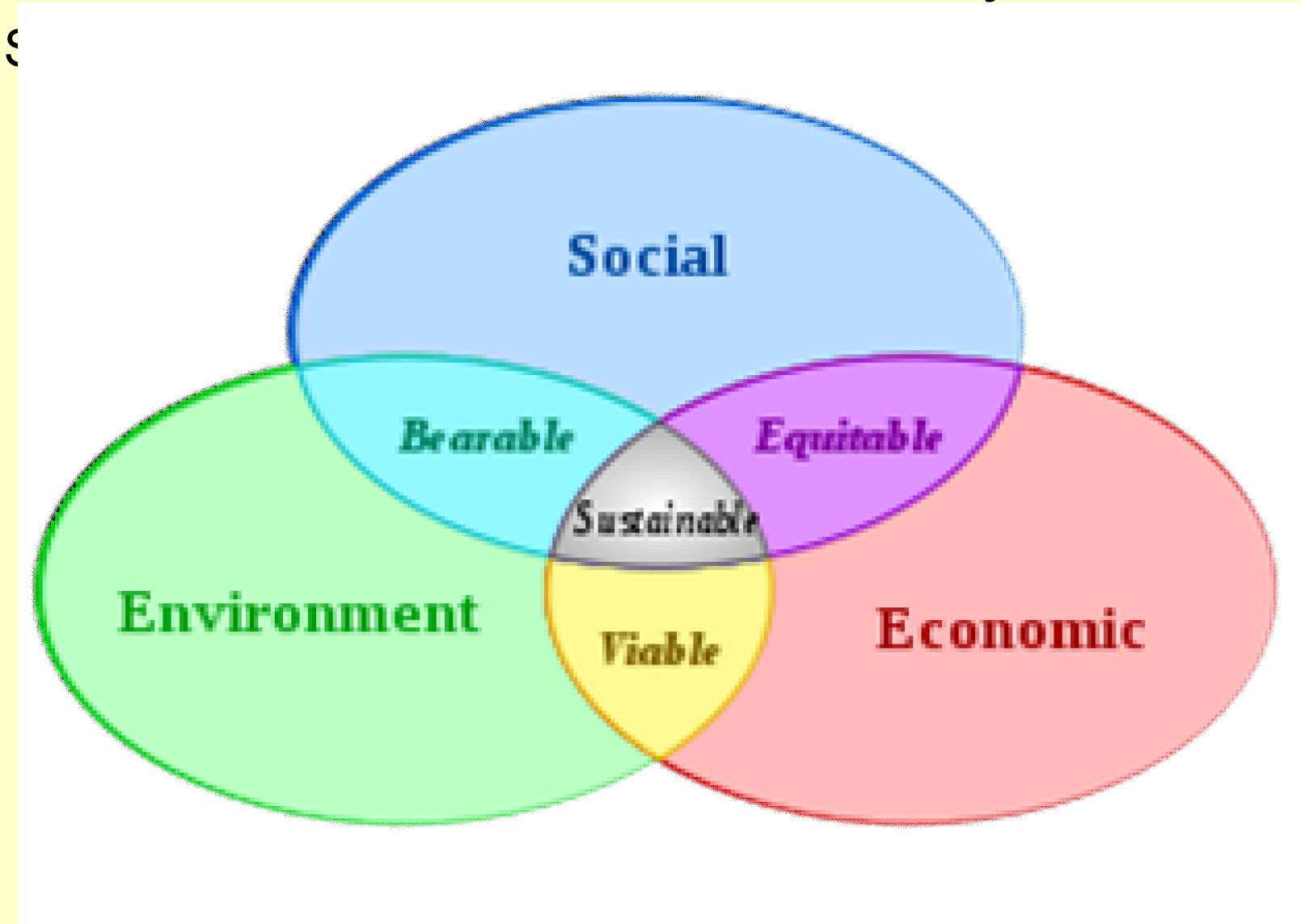
- engage, educate and lead the Community
- improve access to knowledge and tools for the community, Councillors, planners and development practitioners



Sustainable development is an outcome of successfully balancing sometimes competing contributions to community wellbeing, which include:

- jobs
- housing affordability
- water security
- enabling infrastructure
- quality lifestyle
- caring community
- personal safety in community
- care for our environment

Balance = Sustainability





The Community Plan influences and is supported by :

- Council Planning Scheme
- 5 Year Corporate Plan
- Long-term Financial Forecast
- Financial Plan
- Long-term Asset Management Plan
- Budget
- Operational Plan



The Community Planning process should:

- have access to sustainable development knowledge and tools
- be developed consultatively with the Community and other stakeholders
- be evidence based
- involve robust financial and sustainability scenario testing

Pragmatically scope the following issues to determine which are critical for analysis for your Council:

- Council Planning Scheme (including geography, demography, hydrology, soil type and development cost)
- water security
- environment
- community development
- economic development
- enabling infrastructure
- broadband enabled community
- skills development



The Community Planning tool kit should focus on:

- Community engagement and Council leadership
- understanding the balance between the area's capacity for development and the level of development that can be sustainably tolerated
- understanding impacts of potential technology improvements on sustainable development
- impact of CP strategies and options for productivity improvement, sustainable development and community wellbeing
- affordability implications





A Community Plan should:

- embrace community engagement and responsibility
- be unique to the region
- take advantage of regional strengths and opportunities
- manage the risks presented by regional weaknesses and threats
- be sensitive to regional geographic, demographic and hydrologic characteristics and soil types
- enhance land use and environmental planning over time
- improve productivity through synergistic economic development
- be impact assessable
- be affordable



**Successful Community
Plans embrace sustainable
development and deliver
community wellbeing.**

(End Part 4)

Q & A